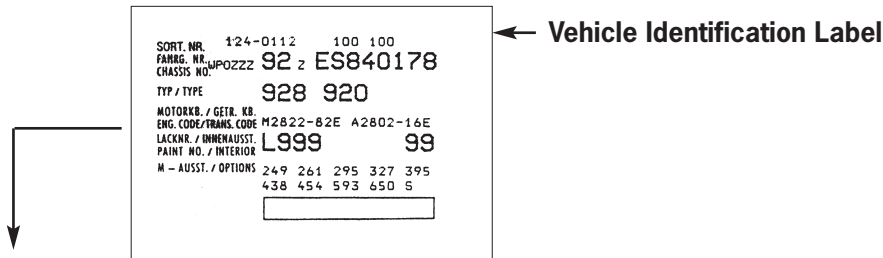


**Optional Equipment – Up To 1998, Except Boxster (986)**

The following is a list of optional equipment numbers. Included are all M numbers found in the parts catalogs for models 911, 924, 928, 944 and 968. Since 1982, option numbers have been included on vehicle identification labels. Some M numbers are considered standard in the USA and as such will not be shown as optional equipment on the vehicle records. Refer to appropriate order guide for list of standard equipment. Some numbers denote more than one option depending on model and/or year. In some cases several options are grouped together and sold as a package, i.e. 1987 944 option R01 = M 431, M 425, M 454, M 533, M 650 and M 946. The packages can also be found in the order guide. Order guides are supplied to your Parts Department by our Sales Department.



		All	911	924	928	944/968	World	USA	Not For USA
M 002	RS touring equipment		•						•
M 003	911 Carrera RS Club Sport		•						
M 006	968 Club Sport					•			
M 009	3 speed sportomatic transmission		•				•		
M 010	"Classic" package								
M 011	"Trend" package								
M 012	"Sport Design" package								
M 013	"Sport Technik" package								
M 014	"Standard" package								
M 014	"Sport" package		•						
M 018	Sport steering wheel with elevated hub	•					•		
M 020	Speedometer with 2 scales KPH/MPH	•					•		
M 024	Version for Greece	•							•
M 026	Activated charcoal canister	•						•	
M 027	Version for California	•						•	
M 030	Sport group with Koni Shocks					•	•		
M 030	Sport Type running gear	•	•						
M 031	Sport group with F & S Shocks					•	•		
M 032	Touring suspension		•						

		All	911	924	928	944/968	World	USA	Not For USA
M 033	Lowered vehicle		•						
M 034	Version for Italy	•							•
M 036	Bumpers with impact absorbers			•		•		•	
M 046	Side turn signals			•					•
M 058	Bumpers with impact absorbers		•		•			•	
M 061	Version for Great Britain	•							•
M 062	Version for Sweden	•							•
M 063	Version for Luxemburg	•							•
M 064	Version for Netherlands	•							•
M 065	Version for Denmark	•							•
M 066	Version for Norway	•							•
M 067	Version for Finland	•							•
M 068	Version for Thailand	•							•
M 069	Other country version	•							•
M 071	EU Country Version	•							•
M 070	Tonneau cover - Cabriolet		•				•		
M 086	Drum brakes			•					•
M 092	Special model, Turbo S, Mod. 97		•						
M 097	Anniversary Model 1989		•						•
M 098	Anniversary Model 1989		•					•	
M 099	Anniversary Model 1989		•						•
M 103	Adjustment of shock absorber strut		•				•		
M 111	Version for Austria		•	•		•			•
M 113	Version for Canada	•							•
M 114	Version for Taiwan		•			•			•
M 119	Version for Spain	•							•
M 124	Version for France	•							•
M 126	Digital Radio 1982	•					•		

		All	911	924	928	944/968	World	USA	Not For USA
M 126	Stickers in French			•		•			•
M 127	Stickers in Swedish	•							•
M 130	Labeling in English	•					•		
M 139	Seat heating - left		•		•	•	•		
M 148	Modified engine 930/66		•						•
M 150	Without catalytic converter			•		•			•
M 151	Engine with differing parts		•						•
M 152	Engine noise reduction		•						•
M 153	Engine parts belonging to a stipulated assembly for type 951		•	•					
M 154	Control unit for improved emissions		•	•		•		•	
M 155	Motronic control unit for cars with catalytic converter		•				•		
M 156	Quieter muffler		•						•
M 157	Oxygen sensor and catalyst	•						•	
M 158	Radio "Monterey"— 86, "Reno" 87 —	•						•	
M 159	Engine sound package		•						
M 160	Radio "Charleston"	•						•	
M 164	Tires 215/60 VR15					•		•	
M 167	Tires made by Bridgestone	•					•		
M 176	Oil cooler with fan		•				•		
M 182	Safety devices in passenger compartment					•			•
M 185	Automatic 2 point rear seat belts	•					•		
M 186	Manual 2 point rear seat belts	•							•
M 187	Asymmetric head lamps	•							•
M 190	Increased side door strength	•						•	
M 193	Version for Japan	•							•
M 195	Prepared for cellular-telephone system	•						•	
M 197	Heavy duty alternator 1988					•	•		
M 197	Higher amperage battery	•					•		

		All	911	924	928	944/968	World	USA	Not For USA
M 198	Stronger starter (1.7 kw) Canada					•			•
M 208	Trailer hitch			•	•				•
M 215	Version for Saudi Arabia	•							•
M 218	License brackets, front and rear	•						•	
M 219	Differential	•			•		•		
M 220	Locking differential	•					•		
M 221	Porsche-locking differential		•		•		•		
M 222	Traction Control System		•						
M 224	Automatic Limited Slip Differential		•						
M 225	Version for Belgium					•			•
M 240	Version for countries with inferior fuel	•							•
M 241	Shorter shifting travel		•				•		
M 241	Tires (Bridgestone,Continental,Dunlap or Michelin) 1994 911	•							
M 243	Shorter gear shift lever		•				•		
M 249	Automatic transmission								
M 249	Tiptronic transmission		•						
M 251	Automatic transmission				•				•
M 255	Fuel consumption indicator					•	•		
M 256	Engine for right hand drive			•					•
M 258	Heating for outside mirror			•	•	•	•		
M 261	Passenger side mirror, electric, plain	•					•		
M 261	Outside mirror, plain, passenger side, electric and heated		•						
M 262	Outside mirror for passenger side, plain, manual			•			•		
M 269	Driving light with switch			•					•
M 270	Outside mirror, plain, driver's side, electric and heated		•						
M 271	Outside mirror, Aspherical, driver's side, electric and heated		•						
M 272	Outside mirror, manual		•						
M 273	Outside mirror, electric and heated		•						

		All	911	924	928	944/968	World	USA	Not For USA
M 274	Make-up mirror, illuminated		•						
M 277	Version for Switzerland	•							•
M 286	High intensity windshield washer		•				•		
M 288	Headlight washer		•		•	•	•		
M 293	Prepared for telephone BECKER B-2 network, West Germany				•				•
M 295	Prepared for telephone TEKADE B-2 network, West Germany				•				•
M 298	Prepared for unleaded fuel - manual transmission	•							•
M 299	Prepared for unleaded fuel - automatic transmission			•	•	•			•
M 302	Type designated on rear end				•		•		
M 308	Pneumatic spring for engine hood			•			•		
M 317	Equipment for dusty conditions				•				•
M 319	Higher speed engine cooling fan				•		•		
M 320	Radio "Porsche CR-11"		•						
M 323	Sticker: Without ECE-Regulations	•						•	
M 324	Radio "Porsche CR-10"		•						
M 325	Version for South Africa	•							•
M 326	Radio Blaupunkt BERLIN IQR 87 with ARI	•							•
M 326	Radio "Porsche CR-21"		•						
M 327	Radio Blaupunkt KOLN SQR 22 with ARI	•							•
M 327	Radio Blaupunkt SYMPHONY RDS					•			•
M 328	Radio Blaupunkt BREMEN SQR 46 with ARI, —90	•							•
M 328	Radio Blaupunkt SYMPHONY SQR 49, 91 —		•						•
M 329	Radio Blaupunkt TORONTO SQR 32								•
M 329	Radio "Porsche CR-210"		•						
M 330	Radio Blaupunkt TORONTO SQR 46	•							•
M 330	Radio "Porsche CR-31"		•						
M 331	Radio Porsche CR-1				•		•		
M 333	Radio Paris RCR 41					•			•

		All	911	924	928	944/968	World	USA	Not For USA
M 334	Radio/Cassette player Bremen RCM 42		•						
M 335	Automatic 3 point rear seat belts	•					•		
M 336	Radio "Duesseldorf RCR 84"		•						
M 338	Rear-wheel drive		•						
M 339	All wheel drive		•				•		
M 340	Seat heating - right		•		•	•	•		
M 341	Central locking system	•					•		
M 347	Platinum anodized wheels		•	•			•		
M 348	Forged wheels - grand prix white					•	•		
M 360	Splash guard corner pieces			•		•	•		
M 369	Series seat, left		•						
M 370	Series seat, right		•						
M 371	Sport seat, left, manual		•						
M 372	Sport seat, right, manual		•						
M 373	Sport seat, left, electric		•						
M 374	Sport seat, right, electric		•						
M 375	Clutch lining without asbestos		•				•		
M 375	Sport seat, back rest shell, left		•						
M 376	Sport seat, back rest shell, right		•						
M 377	Combination seat, left, adjustable		•				•		
M 378	Combination seat, right, adjustable		•				•		
M 379	Series seat, left, electric vertical adjustment	•					•		
M 380	Series seat, right, electric vertical adjustment	•					•		
M 381	Series seat, left, manual			•		•	•		
M 382	Series seat, right, manual			•		•	•		
M 383	Sport seat - left, electric vertical adjustment		•		•	•	•		
M 384	Bucket seat - left		•						•
M 385	Bucket seat - right		•						•

		All	911	924	928	944/968	World	USA	Not For USA
M 387	Sport seat - right, electric vertical adjustment		•		•	•	•		
M 389	Porsche CR stereo/manual antenna		•	•	•		•		
M 391	Stone guard foil, added separately		•				•		
M 392	Interior in Tartan cloth		•				•		
M 393	Forged wheel 8J/9J x 16				•	•	•		
M 393	Targa wheel, 17 inch		•						
M 394	Disk wheel, telephone styling 8J/9J x 16 Cast-Magnesium					•	•		
M 395	Light metal wheels - forged	•					•		
M 395	Cast wheel, 16 inch								
M 396	Disk wheel, telephone styling 8J x 15 rear			•			•		
M 396	Cast wheel, 17 inch		•						
M 397	Forged wheel, black, 7J x 16, rear, Turbo		•				•		
M 397	Cup wheel, 16 inch		•						
M 398	Left outside mirror, electric, plain			•			•		
M 398	Cup wheel, 17 inch		•						
M 399	A/C without front condenser		•				•		
M 400	Cast aluminum wheel 7.5J x 16 and 9J x 16				•	•	•		
M 400	Light metal wheels, 6J x 15, 73-76		•				•		
M 401	Light metal wheels		•		•	•	•		
M 402	Stabilizer bars & Koni shocks, 73-76		•				•		
M 402	50 year anniversary car 1982			•			•		
M 402	Cast wheel "Cup" design 16 inch		•			•	•		
M 403	50 year anniversary car 1982		•				•		
M 403	Cast wheel "Cup" design 17 inch		•			•	•		
M 404	Stabilizer bars			•		•	•		
M 405	Level control system		•				•		
M 405	RS wheel, 18 inch		•						
M 406	50 year anniversary car 1982				•		•		

		All	911	924	928	944/968	World	USA	Not For USA
M 406	Front wheel housing protection 1983-1986				•		•		
M 407	Rear seats, with static seat belts		•						•
M 407	Polished wheels, 3.6 Turbo		•						
M 408	Techno wheel, 18 inch		•						
M 409	Sport seats left and right leather	•					•		
M 410	Sport seats left and right leatherette/cloth	•					•		
M 411	License bracket, front	•							•
M 412	External oil cooler					•	•		
M 413	Turbo-Look wheel		•						
M 414	Combined oil pressure and temperature gauge			•				•	
M 414	Transmission oil cooler					•	•		
M 415	Wider rear track				•		•		
M 416	Leather steering wheel and shift boot			•		•	•		
M 417	Rear storage box in leather				•		•		
M 418	Protective side moldings				•	•	•		
M 418	Automatic Seat Belts		•						
M 419	Rear luggage compartment instead of rear seats		•				•		
M 420	Special model 924 Turbo 1979-80			•			•		
M 421	Front cassette compartment		•						
M 422	Rear cassette compartment		•						
M 423	Cassette container and coin box			•	•	•	•		
M 424	Automatic heating control		•			•	•		
M 424	CD compartment		•						
M 425	Rear wiper		•	•		•	•		
M 426	Special model "Le Mans" 1981			•					•
M 426	Special model World Champion 1976 1978			•			•		
M 427	Special model French			•					•
M 429	Fog headlamp, white			•		•	•		



	All	911	924	928	944/968	World	USA	Not For USA
M 429 Special model "Sebring"			•				•	
M 430 Fog lights - yellow				•				•
M 431 Leather steering wheel 363 mm			•		•	•		
M 432 Sports-steering wheel, leather 363 mm (4 spokes)			•		•	•		
M 432 Steering wheel with Tiptronic control		•						
M 433 Leather steering wheel		•						
M 434 Work instructions-cars for overseas			•		•			•
M 435 Leather steering wheel, Momo		•						
M 436 Targa folding top		•				•		
M 436 3 - spoke air bag steering wheel								
M 437 Comfort seat, left	•					•		
M 438 Comfort seat, right	•					•		
M 439 Electric Cabriolet top		•				•		
M 439 Special model 1980		•					•	
M 439 Electrical roof catch		•						
M 440 Manual antenna, 4 speakers			•			•		
M 441 Fader, antenna booster, 4 speakers					•	•		
M 441 Prepared for radio		•						
M 442 Prepared for radio without antenna			•			•		
M 443 Tinted front and side glass, heated windshield		•						•
M 444 Cabriolet		•				•		
M 445 Emergency wheel for Great Britain			•					•
M 446 Parts for type "Targa" belonging to stipulated assembly		•				•		
M 446 Concave hub cap with colored escutcheon		•						
M 447 Emergency wheel, steel, with collapsible tire			•		•	•		
M 449 Special model for Switzerland			•					•
M 449 Emergency wheel, forged, with collapsible tire, 89—					•	•		
M 450 Light metal wheels			•			•		

		All	911	924	928	944/968	World	USA	Not For USA
M 451	Prepared for radio for sport group, 2 speakers in door		•			•	•		
M 451	Reduced radio preparation		•						
M 454	Automatic speed control	•					•		
M 455	Wheel locks			•		•	•		
M 456	Sport shock absorbers and stabilizers			•		•	•		
M 458	16" alloy wheels					•	•		
M 459	1981 924 Special Model					•			
M 459	Dome strut		•						
M 460	Additional in tank fuel pump				•				
M 461	Electric antenna, 4 speakers			•			•		
M 462	Special model "Weissach"1982				•		•		
M 462	Sekuriflex windshield		•		•	•	•		
M 463	Clear windshield	•					•		
M 464	Without compressor and tire pressure gauge	•						•	
M 465	Rear fog lamp, left					•			•
M 466	Rear fog light, right			•	•	•			•
M 467	Drivers side mirror, convex	•							•
M 467	Driver's side mirror, convex, electric and heated		•						
M 468	Graduated tint windshield, green side glass		•		•	•	•		
M 469	Black headliner		•				•		
M 470	Without spoilers		•		•		•		
M 470	Fixed spoiler		•						
M 471	Sport group 1			•	•		•		
M 471	Integrated rear spoiler				•		•		
M 471	Fixed spoiler with additional wing		•						
M 472	Additional rear apron					•	•		
M 472	Turbo with standard chassis 1980			•				•	
M 473	With spoilers		•		•		•		

	All	911	924	928	944/968	World	USA	Not For USA
M 474 Sport shock absorbers	•					•		
M 475 Brake pads without asbestos	•					•		
M 475 Bilstein shocks and vented rotors, 914-6 - 1970-1971						•		
M 476 Brake pad with abrasive pad		•		•		•		
M 479 Version for Australia	•							•
M 480 6 speed manual transmission					•	•		
M 481 Manual transmission		•	•	•		•		
M 482 Engine compartment light		•				•		
M 482 Tire pressure monitor system (RDK)				•		•		
M 483 Right hand drive		•	•	•				•
M 484 Symbols for controls	•						•	
M 484 Version for USA, 89—	•							
M 485 Forged wheels - gold metallic					•	•		
M 487 Connection for fog headlamp with parking light						•		
M 488 Stickers in German	•							•
M 489 Symbols and insignias in German	•							•
M 490 Hi Fi sound system	•					•		
M 491 Turbo look		•				•		
M 492 H4 headlights for left hand traffic	•							•
M 493 Hi-Fi with 8 speakers, 91 — Cabrio					•			
M 493 Narrow bodywork		•						
M 494 2 speakers on back shelf		•				•		
M 494 Amplifier system 1986-on		•		•		•		
M 495 Carrera S		•						
M 496 Black trim - painted headlight rims		•				•		
M 496 Prepared for philips telephone "C-network"	•							•
M 497 Heavy duty starter			•					
M 498 Without rear model designation	•					•		

		All	911	924	928	944/968	World	USA	Not For USA
M 499	Version for West Germany	•							•
M 499	Sekuriflex windshield - 1984				•				•
M 501	Turbo insignia					•			•
M 503	Cabrio-variant (Speedster)		•				•		
M 504	RS America		•						
M 505	Slant nose		•				•		
M 506	Slant nose variant		•						•
M 509	Fire extinguisher		•						
M 513	Lumbar support, right seat		•		•	•	•		
M 520	Passenger compartment monitoring		•						
M 525	Alarm with continuous sound	•							•
M 526	Cloth door panels		•	•		•	•		
M 528	Passenger side mirror, convex	•					•		
M 529	Outside mirror, passenger side, convex, manual			•			•		
M 529	Anti-Drive-Off feature 315 MHZ		•						
M 530	Anti-Drive-Off feature -96		•						
M 530	Anti-Drive-Off feature 433 MHZ 97-		•						
M 531	Anti-Drive-Off feature, central locking system								
M 532	Deleted remote control Anti-Theft device		•						
M 533	Alarm system	•					•		
M 534	Theft security system		•						
M 535	Anti-Theft lock 315 MHZ		•						
M 536	Alarm siren and tilt sensor		•						
M 537	Left seat with positrol and lumbar				•		•		
M 537	Seating position control for Comfort Seat, left		•						
M 538	Right seat with positrol and lumbar				•		•		
M 538	Seating position control for Comfort Seat, right		•						
M 539	Manual seat height adjustment, left		•						

	All	911	924	928	944/968	World	USA	Not For USA
M 540		•						
M 544		•						
M 545		•						•
M 548			•		•		•	
M 549								•
M 549		•						
M 550		•						
M 551		•						
M 553	•						•	
M 555					•	•		
M 556					•	•		
M 557					•	•		
M 559		•				•		
M 560			•			•		
M 561		•						
M 562					•		•	
M 562		•		•	•		•	
M 563					•		•	
M 563		•						
M 563				•		•		
M 564	•							•
M 565	•					•		
M 566		•				•		
M 566		•						
M 567						•		
M 568	•					•		
M 570				•		•		
M 571			•					•

		All	911	924	928	944/968	World	USA	Not For USA
M 571	Activated charcoal filter		•						
M 572	Heating	•					•		
M 573	Air conditioner	•					•		
M 574	Without air conditioner		•						
M 576	Without rear fog light			•	•	•		•	
M 577	Heated and tinted windshield		•				•		
M 579	Version for Hong Kong		•						•
M 580	Anti drive off feature (immobilizer) 1995-		•						
M 580	Non-Smokers package		•						
M 581	Center console, front		•						
M 586	Lumbar support -left seat		•		•	•	•		
M 590	Center console		•				•		
M 590	Power lid locking		•						
M 592	Antilock brake system (Bosch-Teves)		•				•		
M 592	Brake fluid warning system		•	•					•
M 593	Antilock brake system (Bosch)		•		•	•	•		
M 594	Antilock brake system (Wabco)		•				•		
M 595	Rear spoiler painted color of car				•	•	•		
M 597	Heavy duty battery and starter			•				•	
M 598	Insignia "16-ventiler"					•	•		
M 599	Roof cover molding		•						
M 601	Litronic headlamp		•						
M 602	Third brake light "High mount"	•						•	
M 605	Vertical headlight adjustment		•		•				•
M 607	More numerous cables for dashboard				•		•		
M 611	Prepared for telephone, Nokia "D - Network"		•						
M 612	Prepared for telephone, phillips "C2-network"		•		•	•			•
M 614	Prepared for telephone, Motorola 2210		•						

	All	911	924	928	944/968	World	USA	Not For USA
M 614		•						
M 615		•						
M 618		•						
M 621			•			•		
M 622					•	•		
M 630	•							•
M 631		•						
M 635		•						
M 637		•		•	•	•		
M 638					•			•
M 639				•		•		
M 642				•		•		
M 650	•					•		
M 651		•	•		•	•		
M 652	•					•		
M 655					•	•		
M 656	•					•		
M 657		•	•		•	•		
M 659			•			•		
M 659		•				•		
M 660		•						
M 661		•						
M 662		•						
M 666	•					•		
M 673	•					•		
M 675					•			•
M 680		•						
M 680				•		•		

		All	911	924	928	944/968	World	USA	Not For USA
M 684	1 piece rear seat		•	•		•	•		
M 685	Divided rear seat			•		•	•		
M 686	Radio Blaupunkt, Ludwigsburg SQM 26, ARI	•							•
M 686	Radio "Porsche CDR-21"		•						
M 687	Radio "Muechen RD 104"		•						
M 688	Radio Blaupunkt, Boston SQM 23	•							•
M 688	Radio "Porsche CDR-210"		•						
M 690	CD-Player "CD-10" Radio + ARI	•							•
M 691	CD-Player "CD-01" with Radio —88, "CD-2" with radio 89—	•						•	
M 692	CD changer "Porsche CDC-1"		•		•	•	•		
M 693	CD/Radio "London RDM42"					•			•
M 694	1996 911 Turbo		•						
M 701	Car-version Slant Nose		•				•		
M 702	Tuned engine 930/66		•						•
M 715	Control PV-U Production pilot run					•			•
M 718	Next year VIN	•							
M 719	Special reconstruction					•		•	
M 734	PV-O-Series Engine (non-series)					•			•
M 735	PV-O-Series Transmission (non-series)					•			•
M 752	944 Turbo Cup model					•			
M 754	Turbo-Cup Vehicle					•			•
M 755	Special model 924S 1988			•					•
M 756	Special model 924S, USA 1988			•				•	
M 758	Special model 944 Turbo 1988 - Turbo S					•		•	
M 780	Remove Safety Certificate	•						•	
M 900	Tourist delivery	•						•	
M 912	Without vehicle identification plate	•						•	
M 930	Seat cover rear LLL		•			•	•		



		All	911	924	928	944/968	World	USA	Not For USA
M 931	Seat cover rear KKK		•			•	•		
M 932	Seat cover rear SKK		•			•	•		
M 933	Seat cover rear SLL	•					•		
M 934	Seat cover rear SSK		•			•	•		
M 935	Seat cover rear RLL		•		•		•		
M 936	Seat cover, rear, leather		•						
M 937	Seat cover, rear, leatherette		•						
M 938	Seat cover, rear, cloth		•						
M 939	Seat cover, rear, supple leather		•						
M 945	Seat cover front SKK		•			•	•		
M 946	Leather/leatherette seats			•			•		
M 947	Seat cover front: cloth/leather/leatherette		•				•		
M 948	Seat cover front SLL		•		•		•		
M 970	Front floor mats	•							•
M 974	Luggage boot cover			•		•	•		
M 975	Velour carpet in luggage compartment		•				•		
M 980	Seat cover-Raff-leather		•		•		•		
M 981	All leather lining	•					•		
M 982	Seat covers, front, supple leather		•						
M 983	Leather seats front and rear					•	•		
M 983	Seat covers, front, leather		•						
M 985	Parts silver colored					•	•		
M 986	Partial leather lining		•		•	•	•		
M 989	Left and right sport seats - cloth			•			•		
M 990	Seats all cloth			•		•	•		
M 990	Seat covers, front, cloth, cloth, leatherette	•	•						